



Architectural Subwoofer

THX Ultra2™ Certified

BGX

BGX THX Ultra2 Subwoofer BG Radia, the world leader in innovative planar loudspeakers, presents the BGX subwoofer system, an in-wall subwoofer that incorporates advanced design concepts and technology developed by THX into a unique design suitable for today's homes.

The BGX is as dramatic in appearance as it is advanced in technology and performance. Incorporating proprietary THX technology, the BGX Ultra 2 System™ promises to deliver incredible bass performance with minimal distortion — even in large home theaters.

The BGX Ultra 2 System™ consists of four powerful modules, each containing 12 micro-precision woofers within their own enclosures, arranged in balanced pairs. The four modules have a total radiating area equal to two 18 inch drivers, yet fit completely inside a standard 2x4-inch stud-wall. For each module, all that is visible to the listener is a tall, slim grill 26.5 inches high and just 7 inches wide. Being entirely self-contained, the modules do not rely on the wall cavity in which they reside, or a separate back-box. The Ultra 2 system also has two powerful amplifiers, each amplifier has two channels rated at 600 watts each, for a total of 2400 watts of power.

So unlike most in-wall subs, your walls won't be shaken but you will hear powerful yet acoustically accurate bass.

Key Features of the BGX Subwoofer:

- > THX Ultra2 Certified in-wall subwoofer
- > THX Balanced Bass-line™ is a proprietary new THX technology for delivering vibration-free bass from a very compact speaker design
- > Subwoofer modules are self-contained and do not rely on the wall cavity or back boxes. This delivers best possible performance with consistent results
- > 48 woofers have total radiating area equivalent to two 18" drivers
- > Fits inside standard 2X4 stud wall with visible grill only 26" high and 7" wide

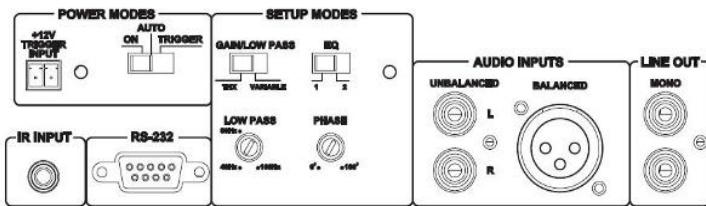




BGX-S6B

BGX-S12B

Drive Units	6 x 4" (100mm) long-throw	12 x 4" (100mm) long-throw
Enclosures	6 individually sealed enclosures	12 individually sealed enclosures
Dimensions	14 3/8" (H) x 14 5/8" (W) x 2 5/8" (D)	26 5/8" (H) x 14 5/8" (W) x 2 5/8" (D)
Narrow Grill	16" (H) x 7" (W)	28 3/8" (H) x 7" (W)
Wide Grill	17" (H) x 15 1/4" (W)	29 3/8" (H) x 15 1/4" (W)
Total Weight	16 lb. (7.3 kg) per module	30 lb. (13.6 kg) per module



BGX-A2 Back Panel

BGX-A2 POWER AMPLIFIER

Number of Channels	2
Output per Channel	600W , 1200 W total
Cross-over Frequency	low pass filter from 40 to 160Hz
Audio Inputs	Balanced and un-balanced
Control Inputs	IR remote, IR direct, RS-232, power trigger
Dimensions	3.5" (H) x 17" (W) x 17.75" (D)
19-inch Rack Mounting	Rack mounting ears included
Total Weight	40 lb.

Driven by 1,200 watts of power, the BGX-A2 Amplifier is capable of producing lifelike playback levels with even the most demanding entertainment content. The amplification, digital signal processing (DSP) and control are all contained within a 2u high, 19-inch rack mountable controller/amplifier unit. Each unit powers two modules.

A BGX Ultra2™ system requires four BGX-S12B modules and two BGX-A2 amplifiers.

Included are new construction brackets, an IR remote, power cord, and rack ears for the amp.